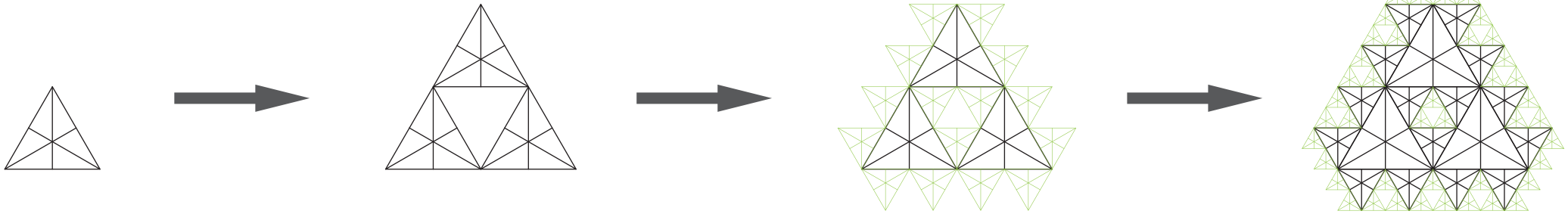


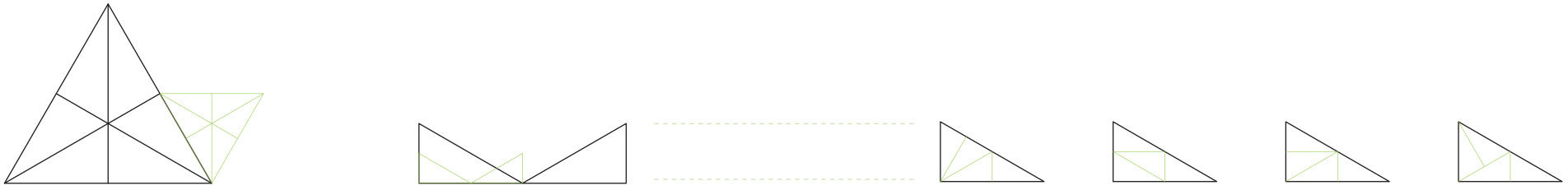
Sierpinski Triangle Tessellation



0. Generation

1. Generation

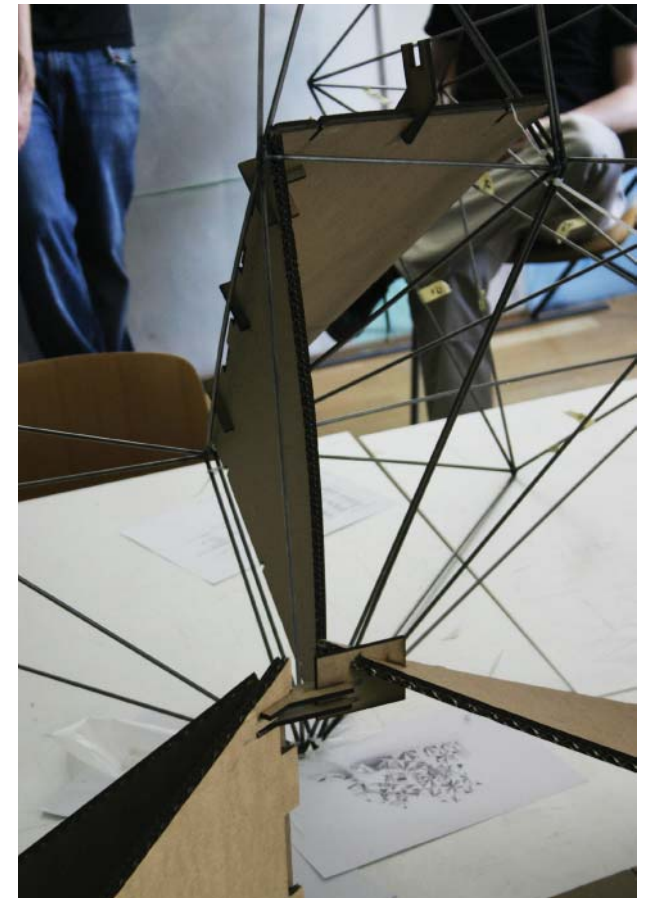
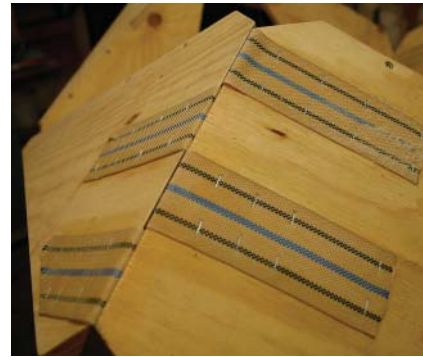
2. Generation



Unterteilung der Andockflächen



Kombination 2 verschiedener Modulgrößen



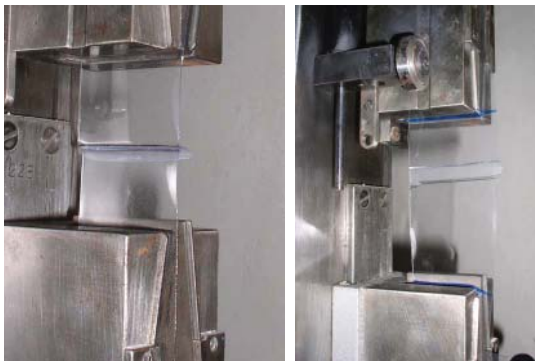
entwerfen einzueins

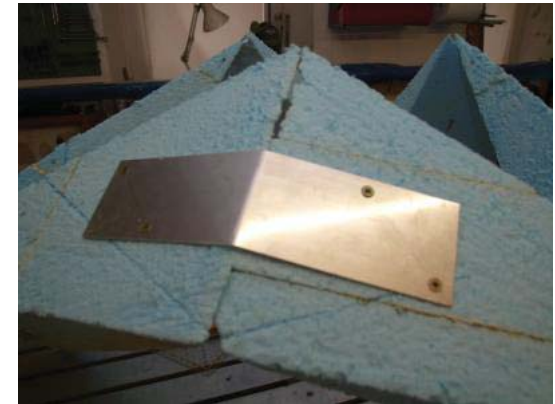
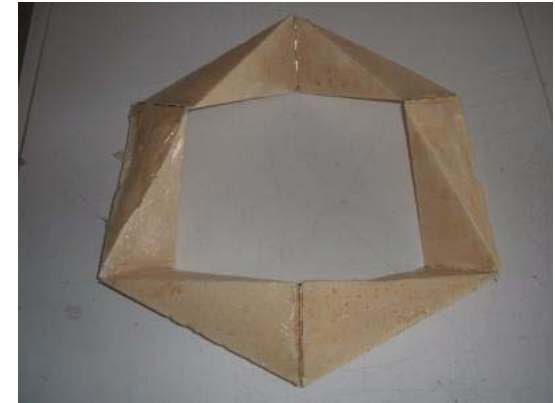
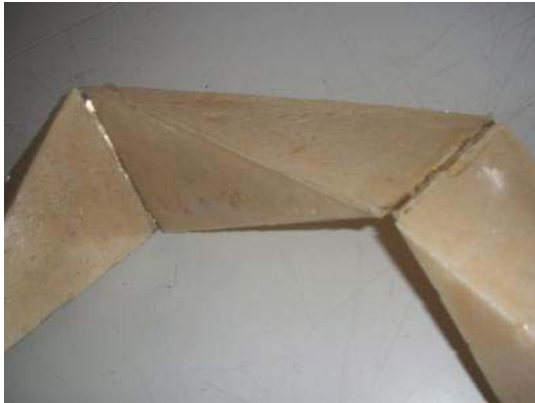
TU wien, institut für entwerfen, abteilung für hochbau, konstruktion, installation und entwerfen

workshop

tests verschiedener materialien und verbindungsmitel











Unnamed ▾

Flächen:

A KILi + B KIRe
A KIRe + B KILi

C2 KILi + D1 KIRe
C2 KIRe + D1 KILi

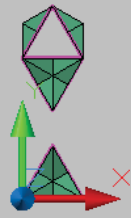
C1 KILi + D2 KIRe
C1 KIRe + D2 KILi

Gürtel A+B
und
A GrRe + C GrLi
B GrLi + C GrRe

asymm. gekoppelt VAR1 ->



A1=A2



B1=B2



C1



C2



D1



D2



C GrLi + D GrRe
C GrRe + D GrLi

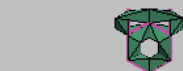
3 unterschiedl. Pos.

4 unterschiedl. Pos.

asymm. gekoppelt VAR2 ->



C1+D2+C2+D1+C1+A+B+F+F+A+B+C1



E1



E2



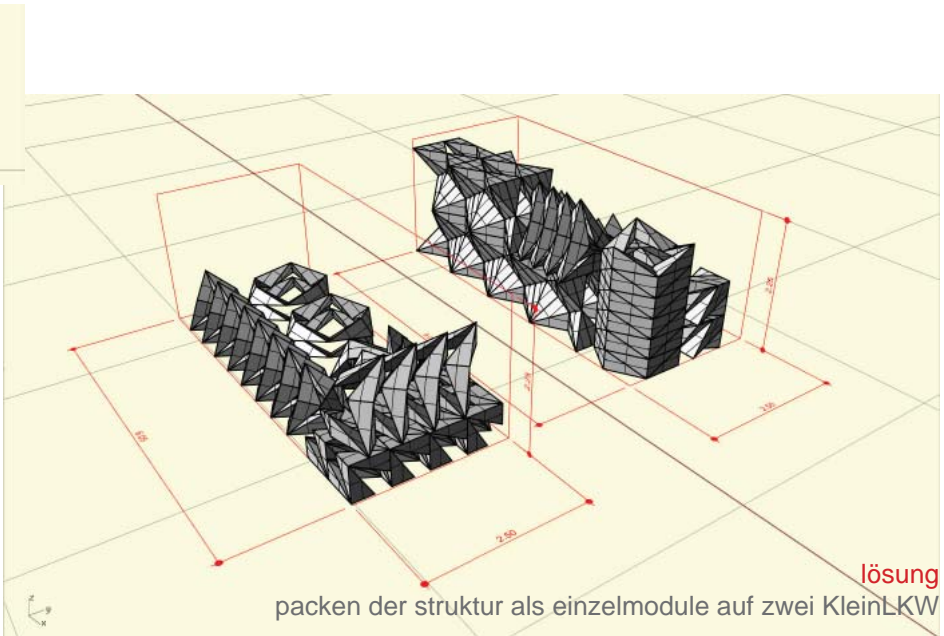
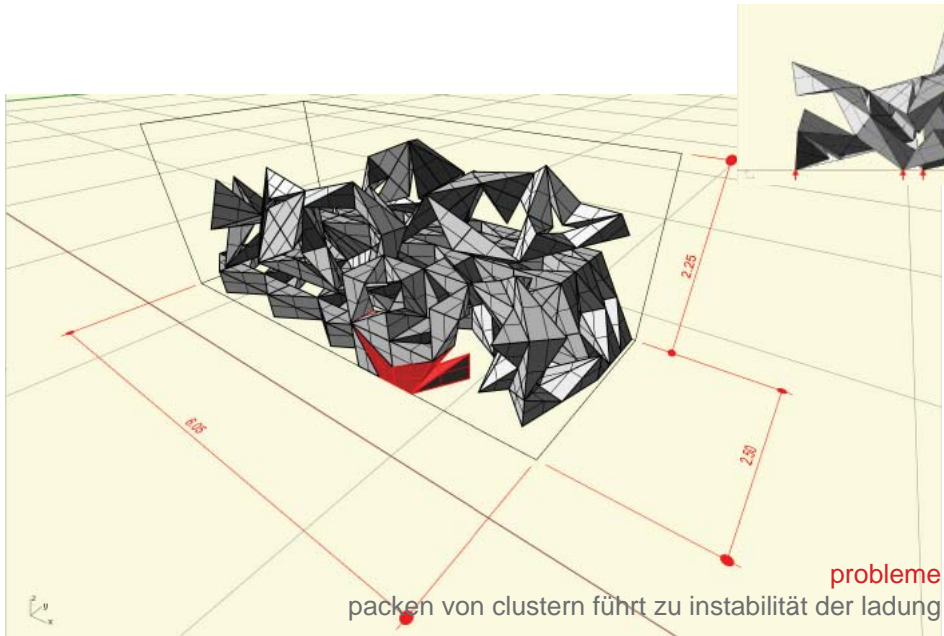
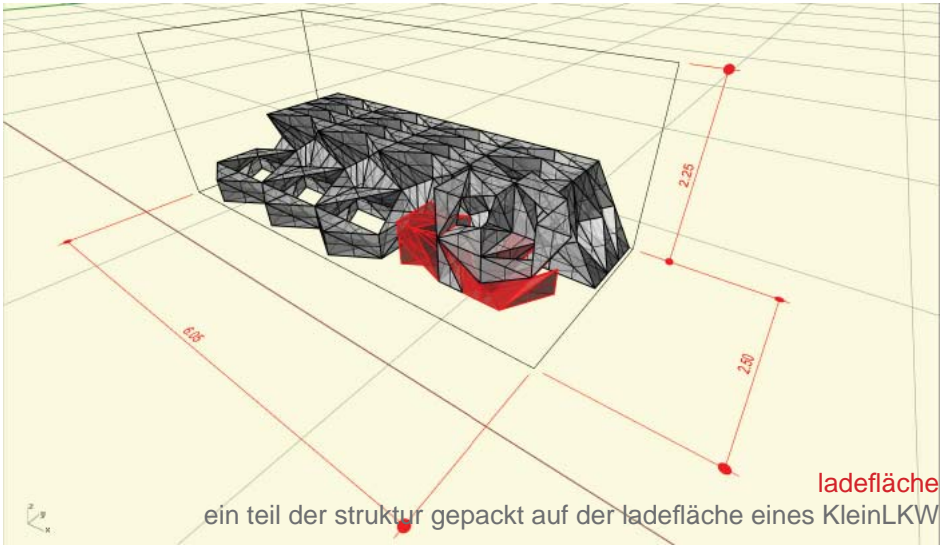
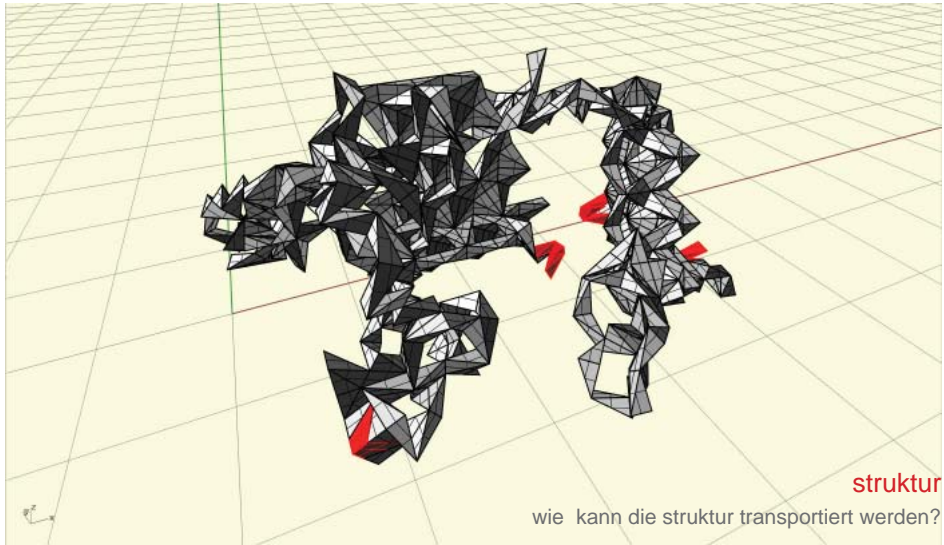
F1=F2

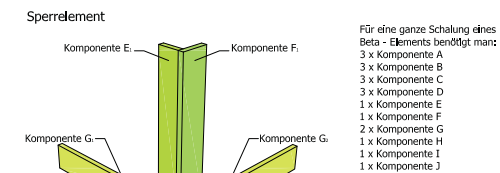
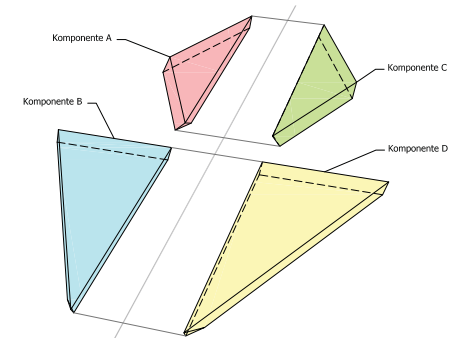
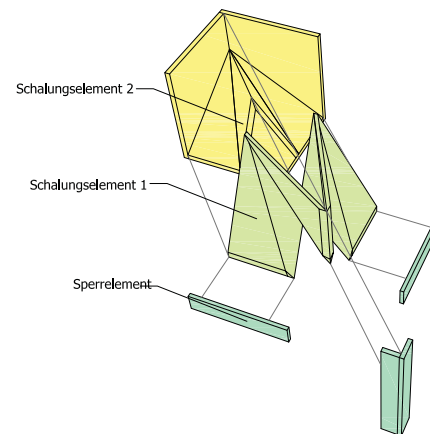
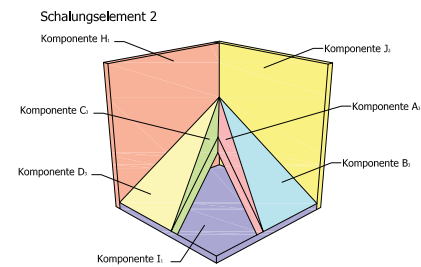
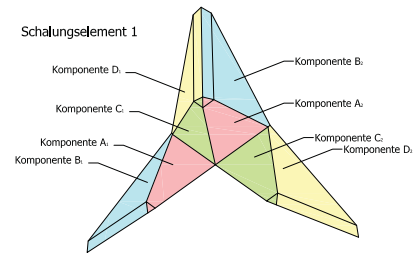
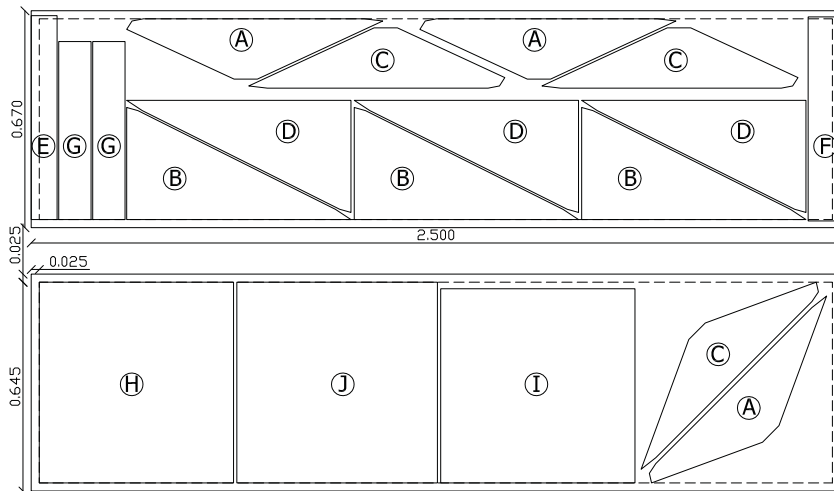
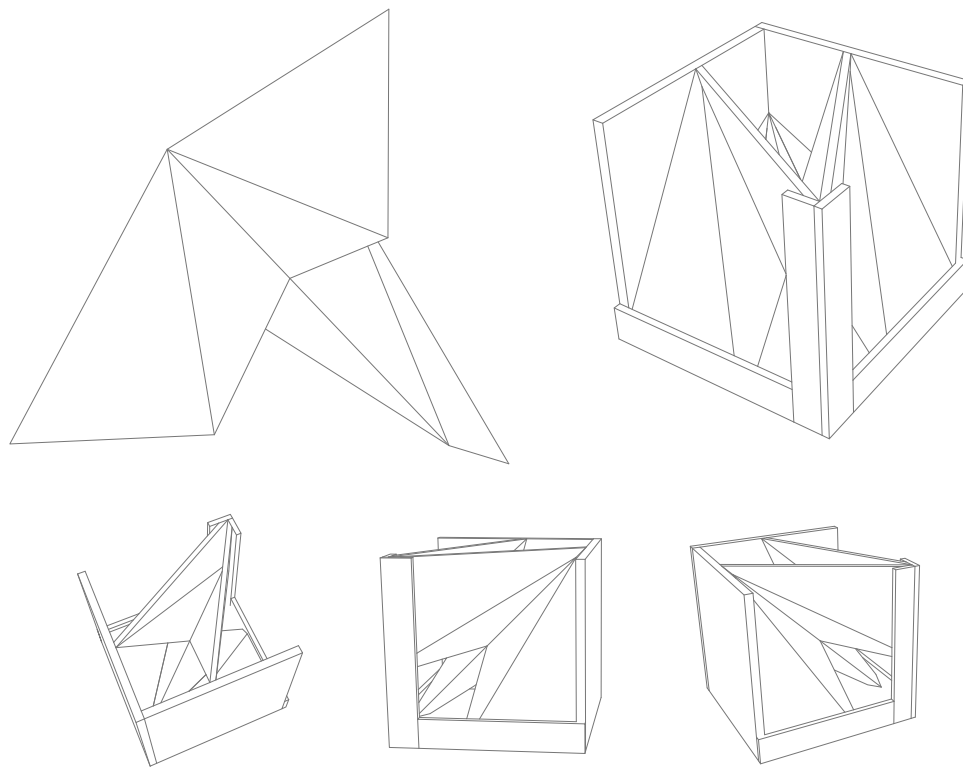


F2=F1

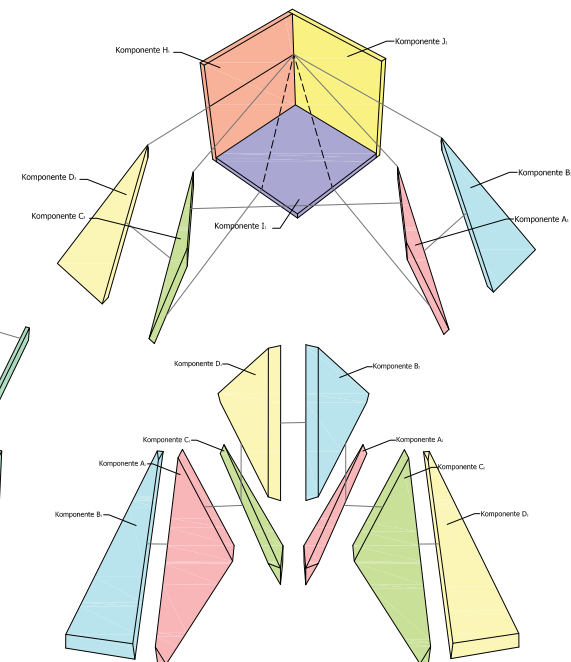




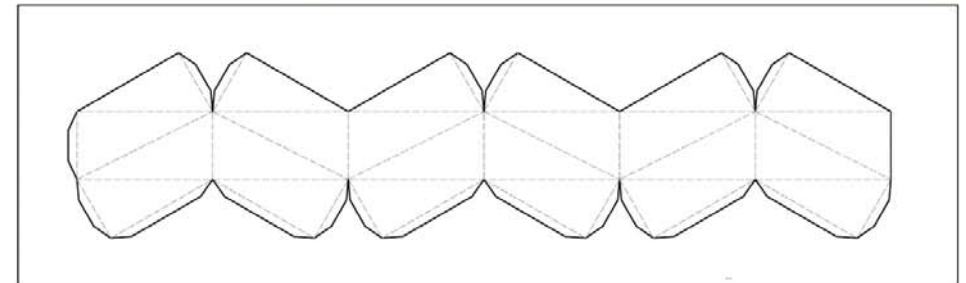
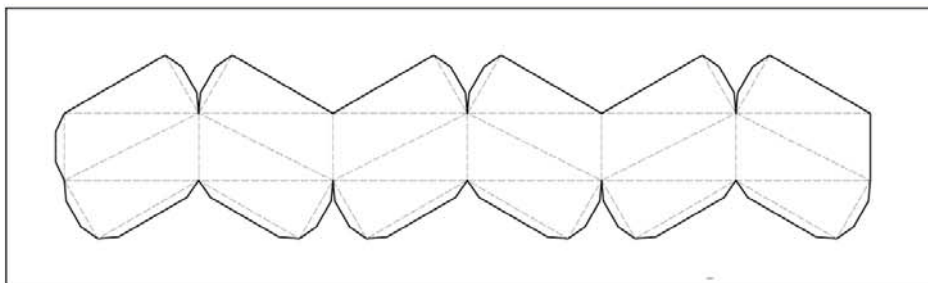
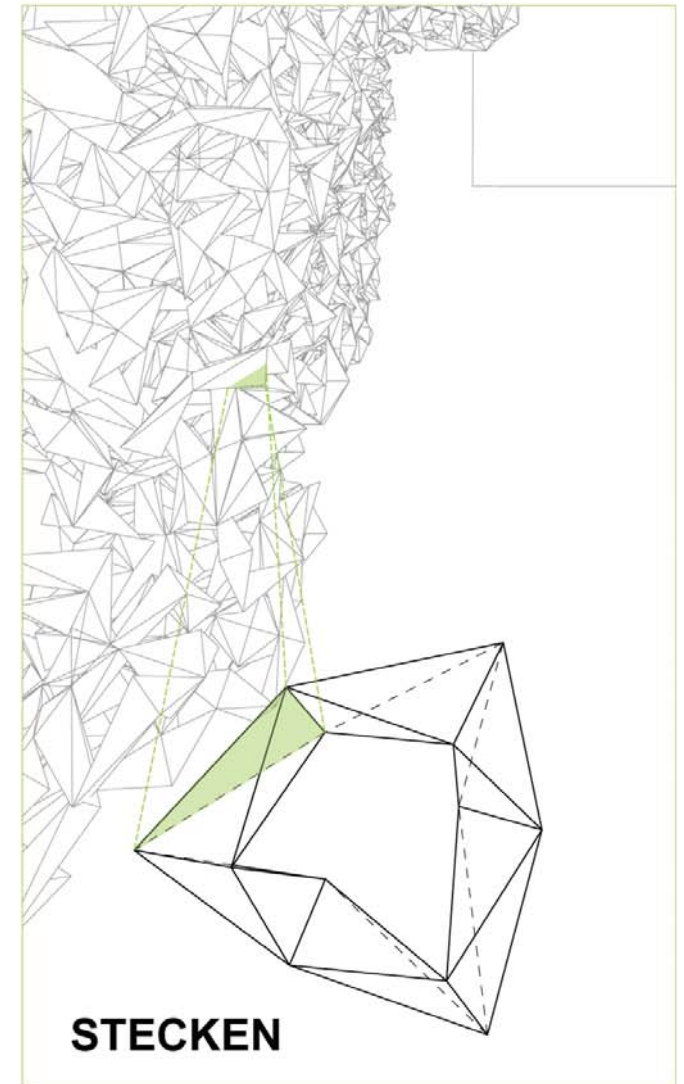
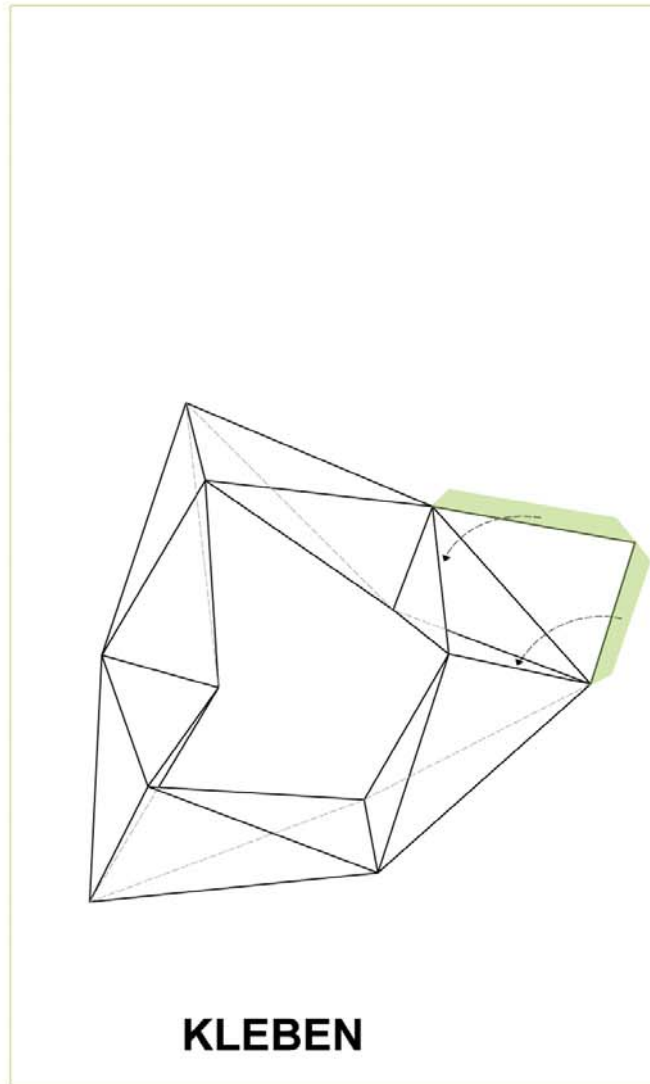
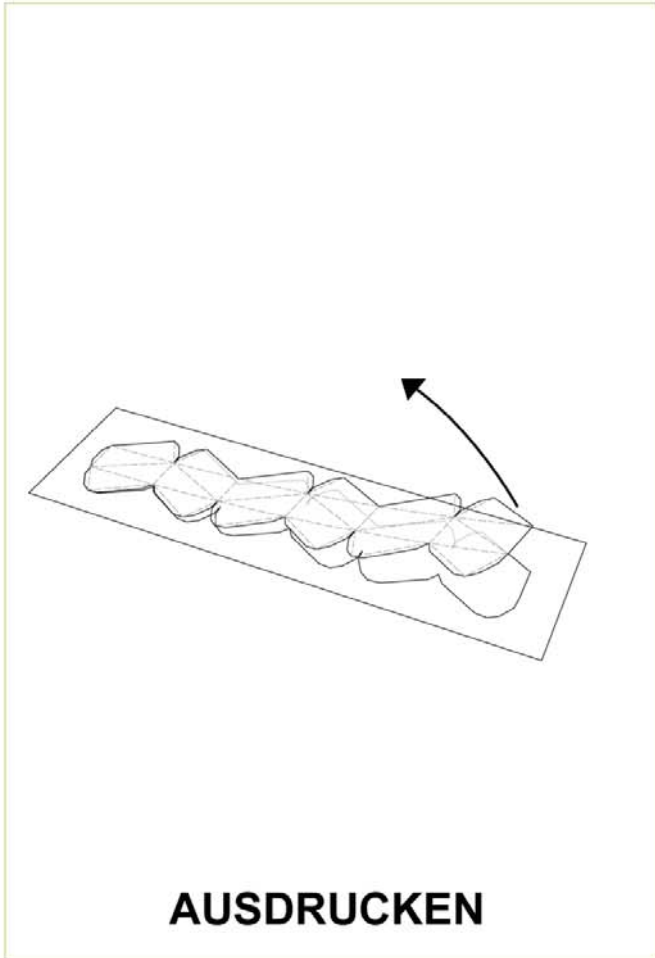




- Für eine ganze Schalung eines Beta - Elements benötigt man:
- 3 x Komponente A
 - 3 x Komponente B
 - 3 x Komponente C
 - 3 x Komponente D
 - 1 x Komponente E
 - 1 x Komponente F
 - 2 x Komponente G
 - 1 x Komponente H
 - 1 x Komponente I
 - 1 x Komponente J

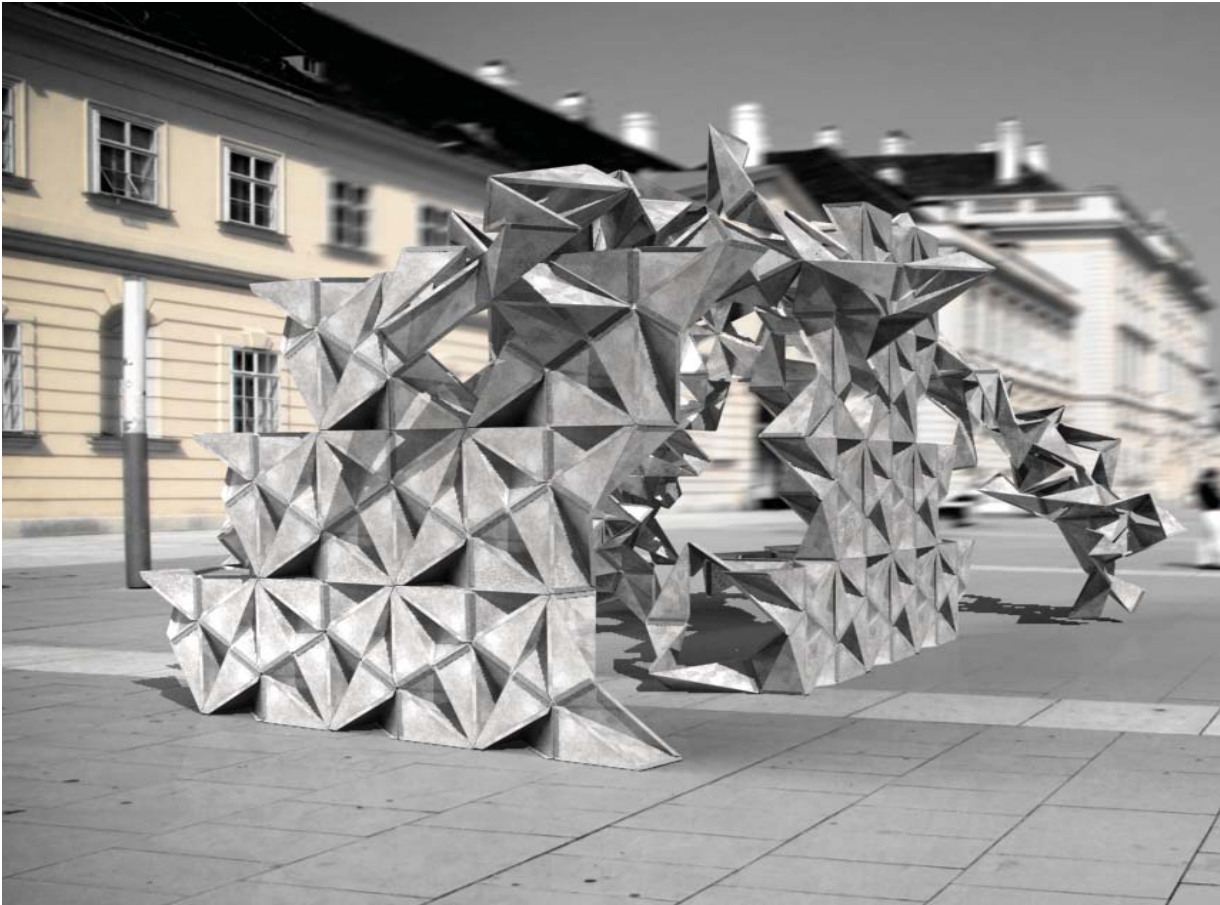


FLYER



dokumentation des entwurfsprozess und weitere informationen auf:

<http://twoday.tuwien.ac.at/e1nszue1ns>



Eckdaten:

Dimension der Struktur:

10,2 x 7,2 x 4,5 m

Gewicht eines Moduls aus 3mm Stahl gekantet:

30 kg

Gewicht eines Sternriegels aus Beton:

150 kg

Material:

3mm Stahl gekantet für die Falt-Tetraeder, 3mm Stahl für die Winkelbleche, Nieten, M6 Schrauben

Anzahl der Module:

104 Module

14 Sternriegel

Anzahl der Winkelstellungen in der Struktur:

9